


NOTES:

1. WATERLINE SIZE TO BE DETERMINED BY CUCAMONGA VALLEY WATER DISTRICT.
2. GATE VALVES AND VALVE BOX ASSEMBLY SHALL NOT BE LOCATED IN CONCRETE GUTTER.

REV.	DESCRIPTION	DATE	APP'D

Cucamonga Valley Water District

TYPICAL WATERLINE AND WATER LATERAL LAYOUT



Cucamonga Valley Water District
 ENGINEERING DEPARTMENT
 10440 ASHFORD STREET, RANCHO CUCAMONGA, CA 91729
 (909) 987-2591

APPROVED BY:



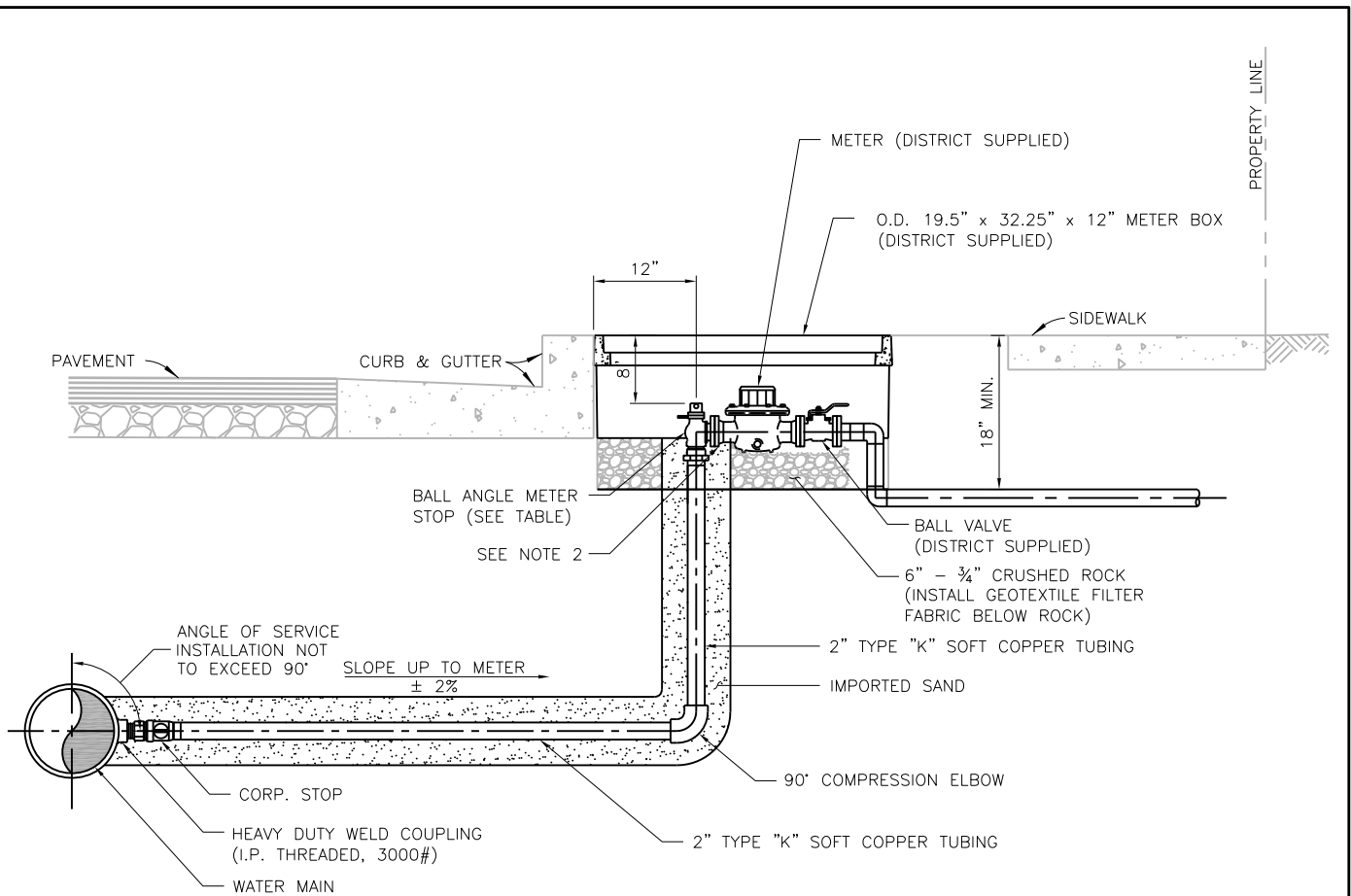
TUAN TRUONG, P.E.,
 ENGINEERING MANAGER

4-17-25
 DATE

STD. DWG.

101-A

SHT. 1 OF 1



1½" AND 2" METERS

NOTES:

1. METER LOCATIONS AS SHOWN ON PLANS.
2. FOR 1 ½" METER, USE 2" X 1 ½" REDUCING METER FLANGE.
3. ROLLED CURB METER BEHIND SIDEWALK.
4. OLD-STYLE PACK JOINT NOT ACCEPTED.
5. ALL CORPORATION BALL VALVES AND ANGLE METER BALL VALVES SHALL HAVE A GRIP JOINT.

SERVICE INFORMATION TABLE

	MUELLER		JONES		A. Y. MCDONALD		FORD	
	BALL CORP. STOP	BALL ANGLE METER STOP	BALL CORP. STOP	BALL ANGLE METER STOP	BALL CORP. STOP	BALL ANGLE METER STOP	BALL CORP. STOP	BALL ANGLE METER STOP
1 ½", 2"	B25028N	B24276N	E1935SG	E1975WSG	74704BQ	74602BQ	FB1100-x-Q-NL	BFA43-xxxW-Q-NL

Cucamonga Valley Water District

TYPICAL WATER SERVICE 1 1/2-INCH AND 2-INCH W/ WATER METER



APPROVED BY:

Juan

TUAN TRUONG, P.E.,
ENGINEERING MANAGER

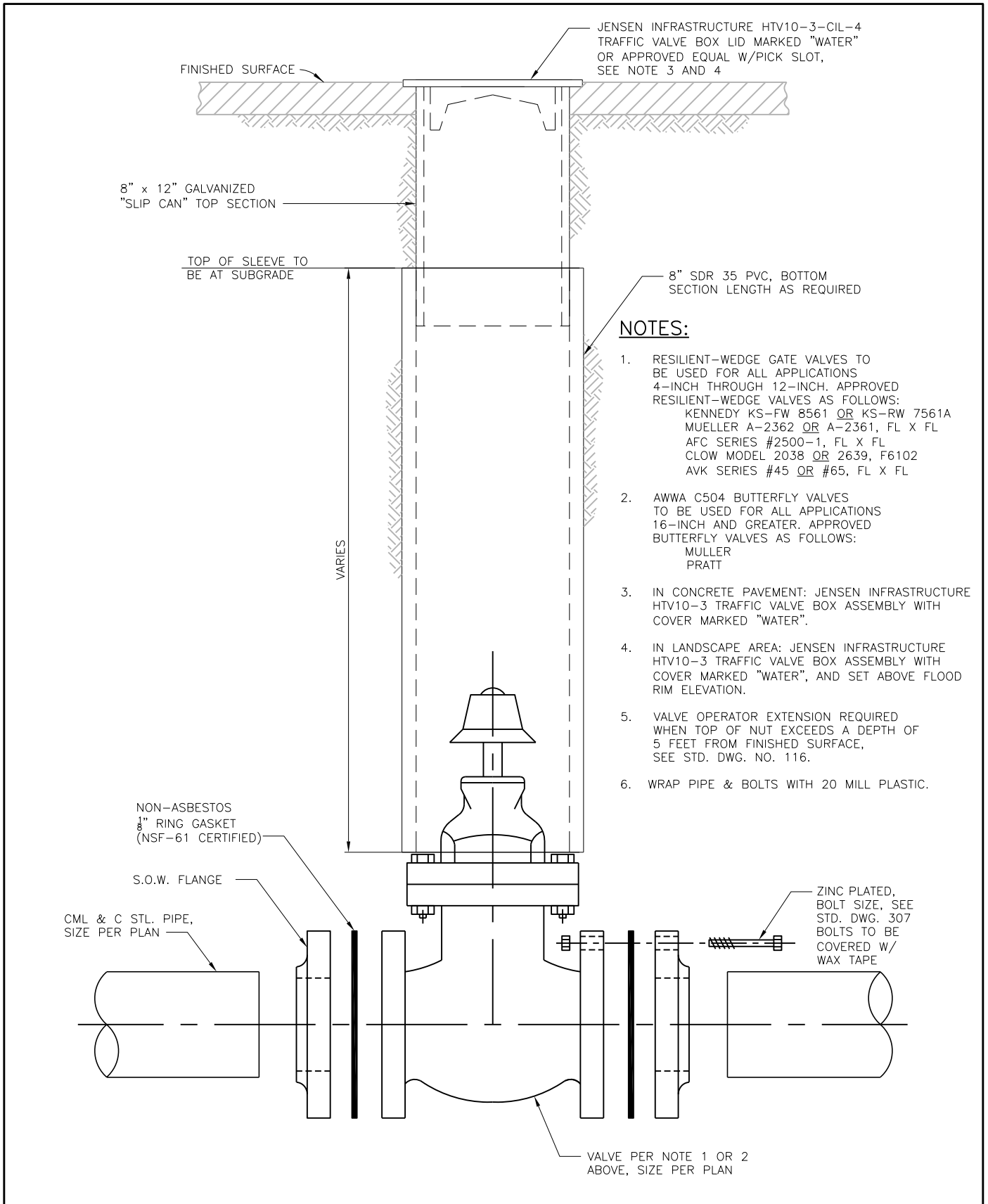
12-22-25
DATE

STD. DWG.

103

SHT. 1 OF 1

REV.	DESCRIPTION	DATE	APP'D



Cucamonga Valley Water District

VALVE AND BOX ASSEMBLY

Cucamonga Valley Water District

ENGINEERING DEPARTMENT
10440 ASHFORD STREET, RANCHO CUCAMONGA, CA 91729
(909) 987-2591

APPROVED BY:

Juan

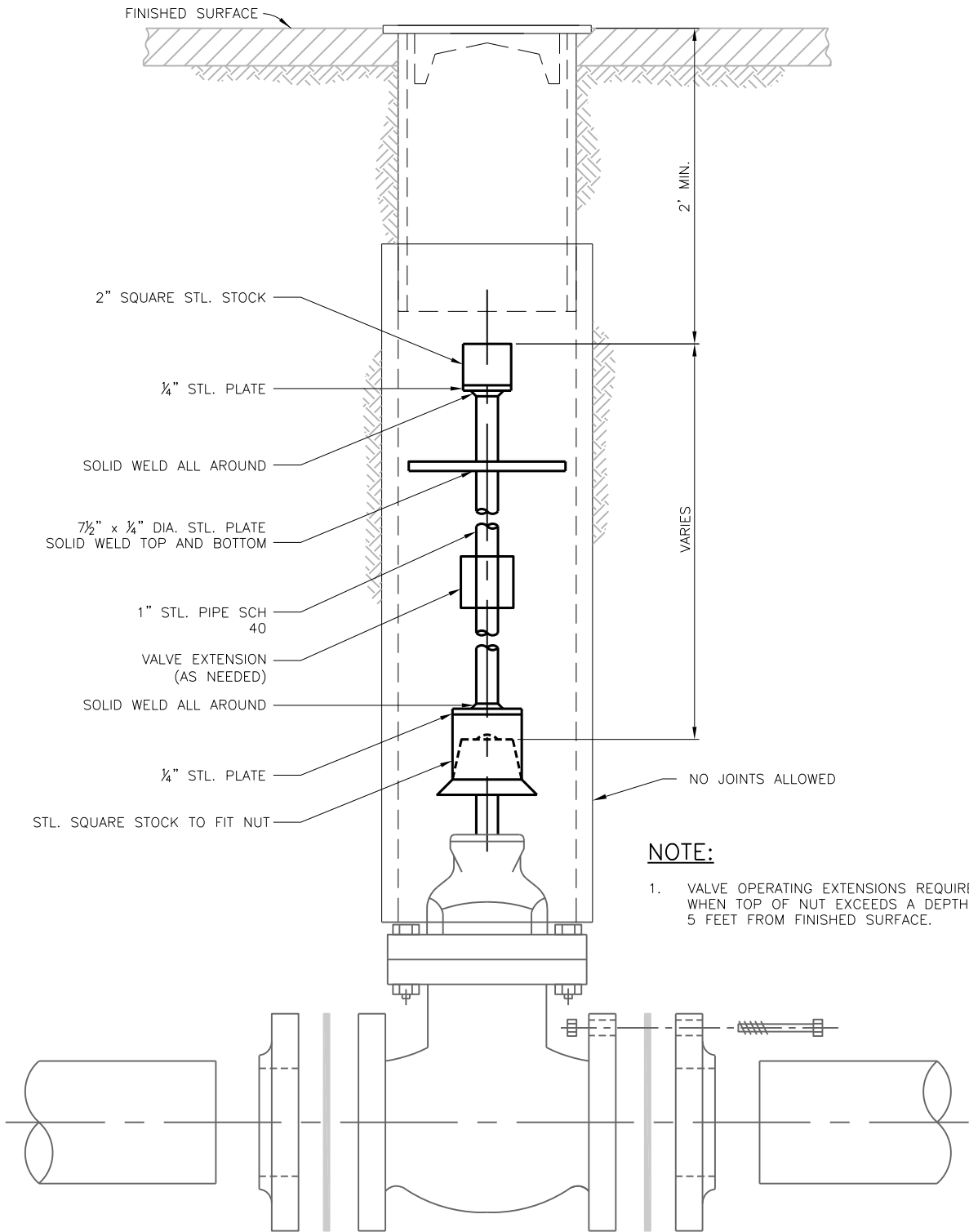
TUAN TRUONG, P.E.,
ENGINEERING MANAGER

11-10-25
DATE

STD. DWG.

115

SHT. 1 OF 1



REV.	DESCRIPTION	DATE	APP'D

Cucamonga Valley Water District

VALVE OPERATOR EXTENSION



**Cucamonga Valley
Water District**

ENGINEERING DEPARTMENT
10440 ASHFORD STREET, RANCHO CUCAMONGA, CA 91729
(909) 987-2591

APPROVED BY:

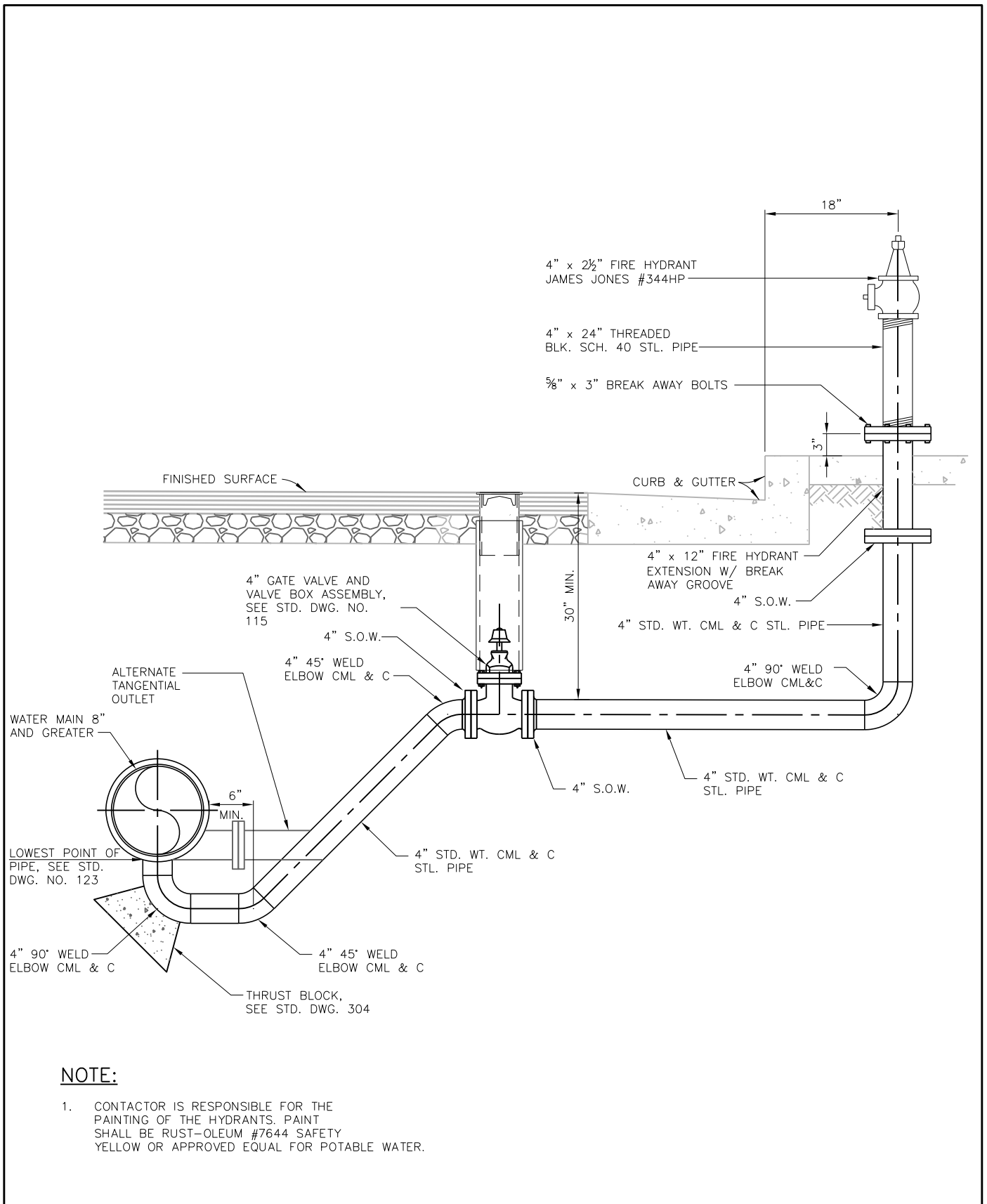
TUAN TRUONG, P.E.,
ENGINEERING MANAGER

4-17-25
DATE

STD. DWG.

116

SHT. 1 OF 1



NOTE:

1. CONTACTOR IS RESPONSIBLE FOR THE PAINTING OF THE HYDRANTS. PAINT SHALL BE RUST-OLEUM #7644 SAFETY YELLOW OR APPROVED EQUAL FOR POTABLE WATER.

DATE	APP'D	DESCRIPTION	REV.

Cucamonga Valley Water District

BLOW OFF ASSEMBLY 4 INCH AND ABOVE

Cucamonga Valley Water District
 ENGINEERING DEPARTMENT
 10440 ASHFORD STREET, RANCHO CUCAMONGA, CA 91729
 (909) 987-2591

APPROVED BY:

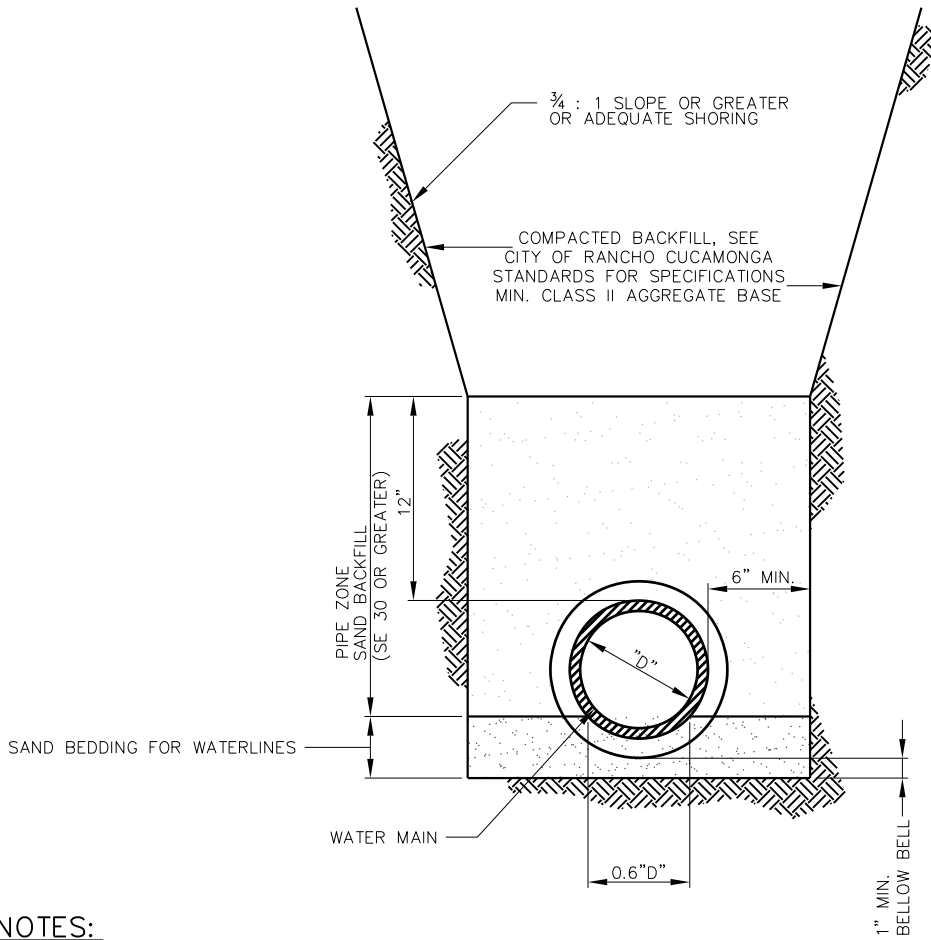
TUAN TRUONG, P.E.,
 ENGINEERING MANAGER

4-17-25
 DATE

STD. DWG.

119

SHT. 1 OF 1



NOTES:

1. TRENCH WIDTH SHALL BE CONTROLLED TO TOP OF PIPE ZONE.
2. TRENCH DEPTHS OF GREATER THAN 5' SHALL HAVE ADEQUATE SHORING.
3. COMPACTION SHALL BE 95% IN ALL ZONES UNLESS OTHERWISE SPECIFIED.
4. TRENCH STABILITY TO CONFORM TO CAL-OSHA REQUIREMENTS.

REV.	DESCRIPTION	DATE	APP'D

Cucamonga Valley Water District

WATER TYPICAL TRENCH SECTION



Cucamonga Valley Water District
ENGINEERING DEPARTMENT
 10440 ASHFORD STREET, RANCHO CUCAMONGA, CA 91729
 (909) 987-2591

APPROVED BY:



TUAN TRUONG, P.E.,
 ENGINEERING MANAGER

4-17-25
 DATE

STD. DWG.

301-A

SHT. 1 OF 2